

# CAST PLAQUES – MATERIALS AND FINISHES

## PAINTED BACKGROUND COLORS



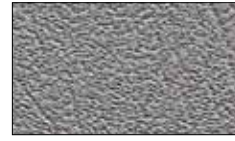
Light Oxide Stain



Dark Oxide Stain  
(most popular for bronze)



Dark Green



Metallic Grey



Black  
(most popular for aluminum)



Natural Sandblast  
(on aluminum)



Natural Sandblast  
(on bronze)



Light Bronze



Medium Bronze



Dark Bronze



Golden Bronze  
M-40



Dark Brown  
M-70



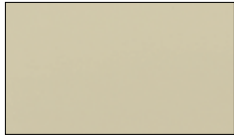
Dark Grey  
M-9



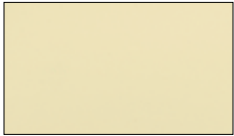
Medium Grey  
M-8



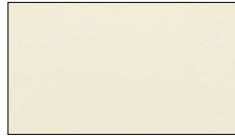
Light Grey  
M-5



Beige  
M-65



Cream  
M-71



Ivory  
M-58



White



Orange  
M-102



Dark Blue  
M-28



Medium Blue  
M-25



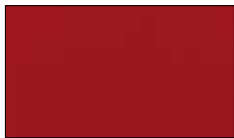
Light Blue  
M-20



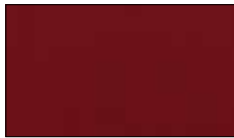
Green  
M-38



Red  
M-107



Dark Red  
M-115



Maroon  
M-118

## PROTECTIVE COATINGS

Matthews recommends that bronze plaques have a protective coating applied.



**Diamond Shield® Protective Coating (exterior applications):** Available exclusively from Matthews, this clear coat is factory-applied only. With a higher gloss than our clear protective lacquer, Diamond Shield® provides maximum durability in harsh exterior environments where plaques are exposed to salt, pollution, and weather. There is a lifetime warranty on Diamond Shield® Protective Coating.



**Matthews Clear Protective Lacquer:** Providing a low-gloss appearance, this clear coating was developed by Matthews to inhibit oxidizing. Ideal when matching older plaques or when a lower-gloss look is desired. There is a one year warranty on Matthews' Clear Coat.

## Custom Color

Custom matched color \$110 additional (minimum) charge. Submit or PMS color matching system numerical designation.